



Lock House, St Julian Street, Tenby
Pembrokeshire, SA70 7AS

Telephone; (01834) 842204
Email; sales@birtandco.co.uk

www.birtandco.co.uk



Breakwater House
Crackwell Street
Tenby SA70 7BY



£695,000

House
Freehold

A four-storey townhouse with integrated garage, offering wonderful views overlooking Tenby's iconic Harbour from the living spaces and bedrooms.

The house was built in 2002 and has been enjoyed since then by the current owners.

With 3 bedrooms, parking, central location with sea views, an open plan living area, and shower/bathroom on 2 of the levels, it would make an ideal holiday retreat or seaside home.

Crackwell Street is a popular and sought after location, and the master bedroom and living room have sash bay windows on the front of the property making the most of the incredible sea views.



LOCK HOUSE C. 1750



Regulated by R.I.C.S. Giles Birt, B.Sc., M.R.I.C.S



- **Superb Harbourside Location**
 - **3 Bedrooms**
- **Open Plan Kitchen / Diner**
- **Modern Building (2002)**

- **Garage Parking**
- **Sea Views from 3 Levels**
- **Master En-Suite Bedroom**

Entrance Hall

Front door opens in from Crackwell Street, with doors to the garage and utility room, and staircase to the rear.

Utility Room 9'6" x 5'10" max (2.9 x 1.8 max)

A handy ground floor space with sink with drainer, space and plumbing for a washing machine, and the gas boiler. There is a small window to the rear.

Garage 18'4" x 8'10" (5.6 x 2.7)

The house offers a convenient secure parking / storage area, with up and over electric door, and internal door to the hallway.

Lounge/Kitchen/Diner 22'7" x 17'4" max (6.9 x 5.3 max)

An L-shaped open plan space, with fantastic harbour views from a large sash bay window and a sash window. The kitchen area has floor and wall cabinets with Neff oven, hob, extractor fan and dishwasher, with a window to the rear.

Bedroom One 17'4" x 12'5" into bay (5.3 x 3.8 into bay)

Spacious double bedroom with harbour views from the bay window and a sash window, with fitted wardrobes.

Shower Room 10'5" x 10'5" max (3.2 x 3.2 max)

Partly tiled shower room, with shower cubicle, sink in vanity, WC, and heated towel rail, plus a window to the rear.

Bedroom Two 12'1" x 10'5" (3.7 x 3.2)

A double bedroom on the top floor, with sash window overlooking the harbour, and hatch giving access to the attic.

Bedroom Three

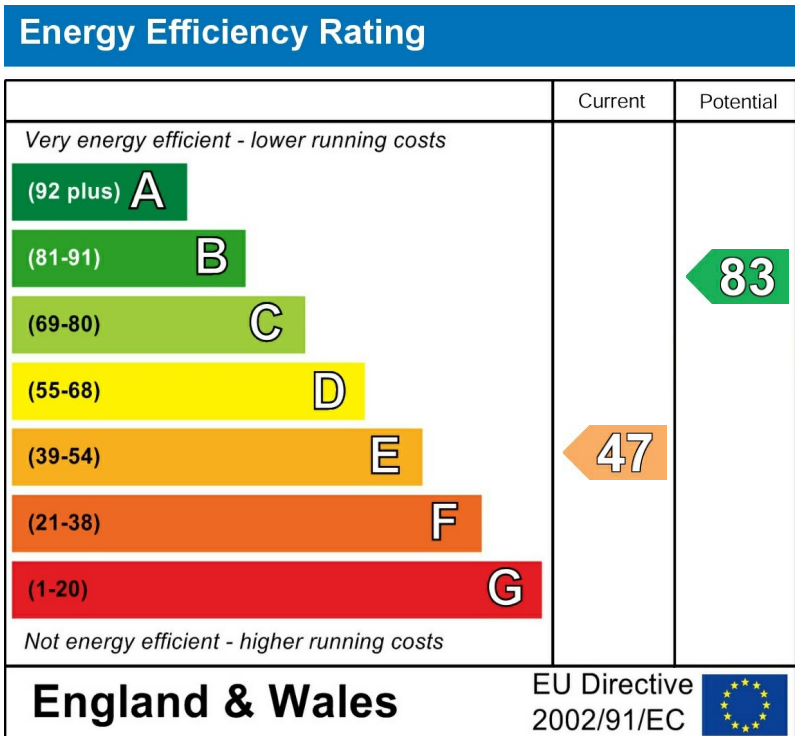
A single bedroom on the top floor with sash window overlooking the harbour, and built-in storage cupboard.

Bathroom 5'10" x 10'2" max (1.8 x 3.1 max)

Partly tiled family bathroom, comprising bath with shower over, sink in vanity unit, and WC. There are a heated towel rail and window to the rear.

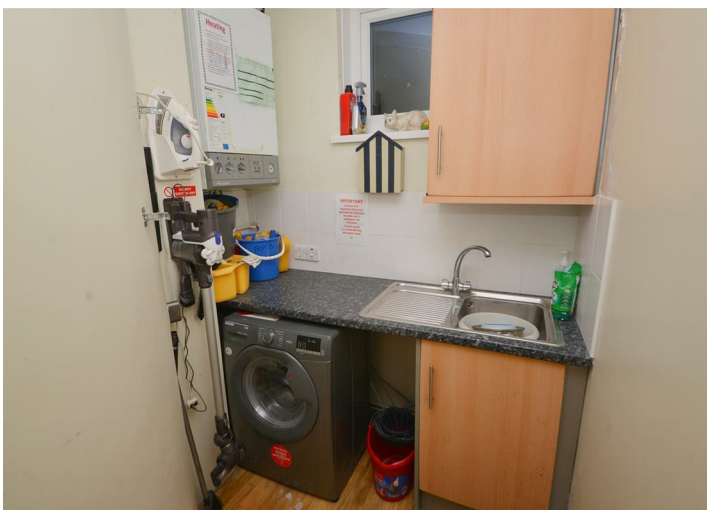
Please Note

Gas central heating. Double glazing throughout. We are advised that mains water, electric, gas and drainage is connected to the property. The Pembrokeshire County Council Tax Band is H - approximately £4,191.42 for 2025/26.

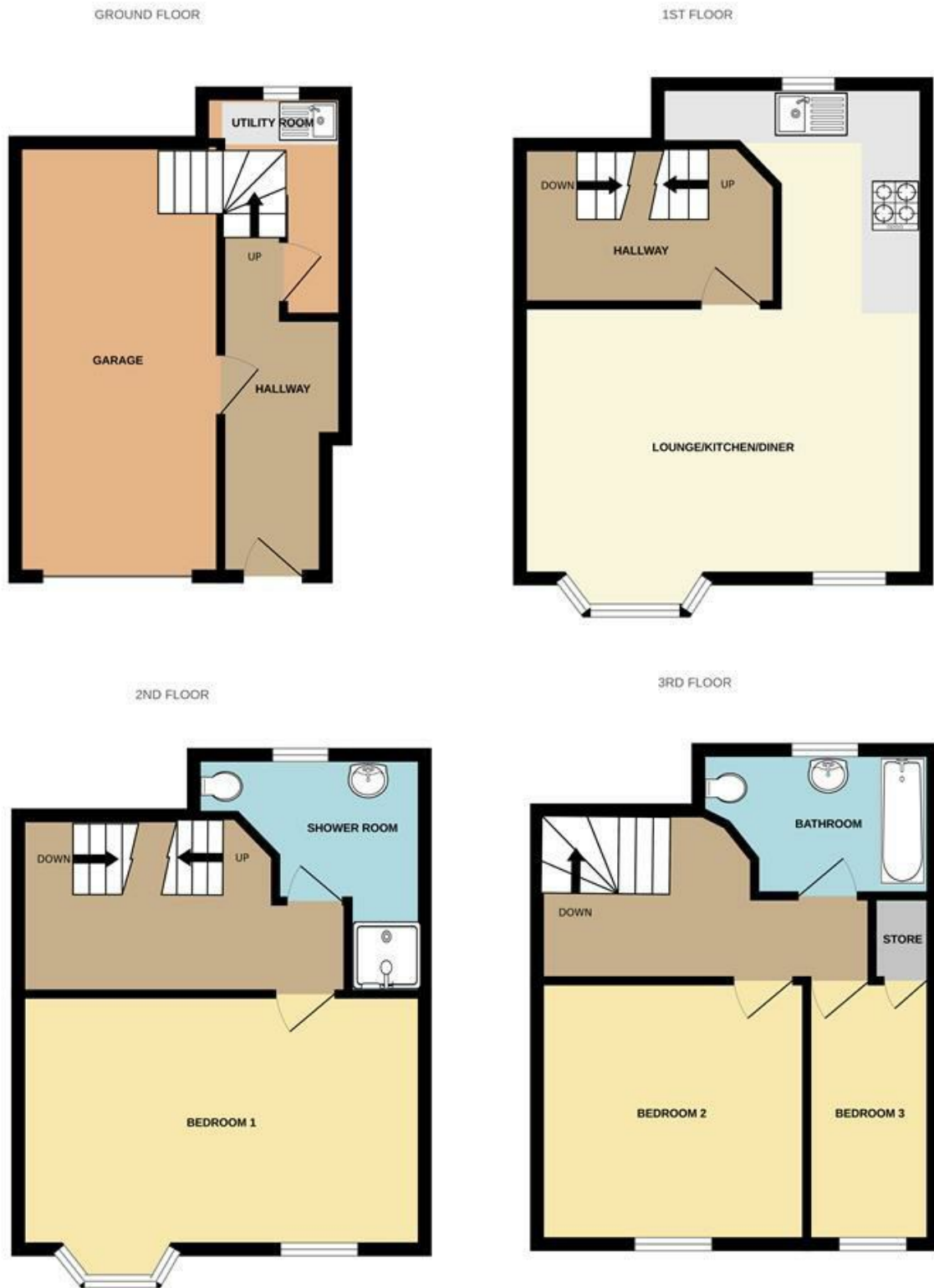








Floor Plan



Measurements are approximate. Not to scale. Illustrative purposes only
Made with Metropix ©2025

These particulars, whilst believed to be accurate are set out as a general outline only for guidance and do not constitute any part of an offer or contract. Intending purchasers should not rely on them as statements of representation of fact, but must satisfy themselves by inspection or otherwise as to their accuracy. No person in this firm's employment has the authority to make or give any representation or warranty in respect of the property.